

Non-Return Valves

Description

RMC *Non-Return Valves* prevent the backflow of water from a water heater to the mains line. This serves the dual purpose of protecting the mains supply from contamination, and the loss of water that has already been heated.

Non-Return Valves are suitable for use in domestic and commercial water heater installations, and are rated for high temperature applications (up to 99° C).

RMC *Combination Non-Return Valves* are available in 15 mm, 20 mm and 25 mm configurations, and conform to AS1357.1-2004.



Features and Benefits

- ❖ Machined from solid brass
 - » *Durable, non-leak body*
- ❖ Tamper-proof non-return valve
 - » *Offers non-return protection for the life of the valve*
- ❖ Dezincification resistant
 - » *Meets Australian Standard for potable water supply*
- ❖ Suitable for horizontal or vertical installation
 - » *Valve designed to work effectively in either orientation*

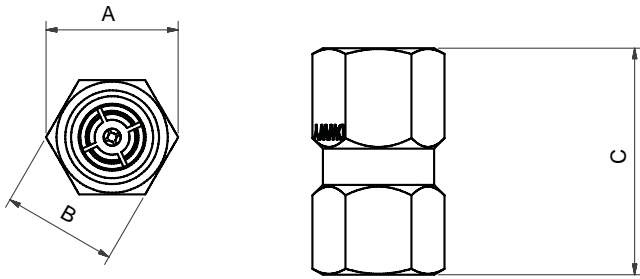
Application

RMC *Non-Return Valves* are suitable for use on water heater systems or wherever non-return functionality is required. RMC recommends installing a *Non-Return Valve* as part of a complete inlet control system for water heater applications.

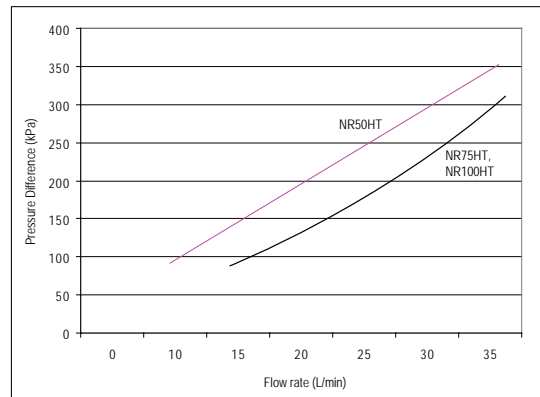
Non-Return Valves

Specification

Operating temperature:	1° C-99° C
Maximum inlet pressure:	1400 kPa
Inlet/Outlet Fittings:	B.S.P. (F.I.)
Installation Orientation	Horizontal or Vertical
Flow rate, maximum	36 L/min (NR50HT), 50 L/min (NR75HT, NR100HT)
Opening pressure	2.1 kPa (NR50HT), 1.7 kPa (NR75HT, NR100HT)



Flow Characteristics



Dimensions

Model	A	B	C	Outlet (O)
NR50HT	31	27	53	DN15
NR75HT	43	37	62	DN20
NR100HT	44	38	68	DN25

NB: All dimensions in millimeters unless otherwise stated.

Materials

Body	Arsenical Brass
Internal Parts	Neoperl OV15-HT AS4020 Approved

Catalogue Numbers

Model	Catalogue Number
NR50 High temperature 15 mm Female BSP	NR50HT
NR75 High temperature 20 mm Female BSP	NR75HT
NR100 High temperature 25 mm Female BSP	NR100HT