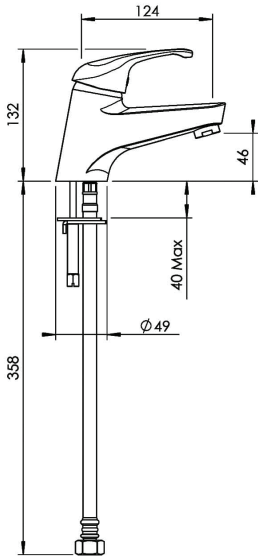


ECHO STRATA BASIN MIXER



CONSTRUCTION: Brass body

CARTRIDGE TYPE: Ceramic

CLASSIFICATION: Suitable for **all pressures**

INLET CONNECTIONS: 1/2" BSP

WORKING PRESSURE: 35 - 500kPa

DIMENSIONS FOR FITTING: 35mm diameter hole

OPERATING TEMPERATURE: 5 °C - 65 °C

- Stainless steel flexible hoses for installation
- Fitted with aerator
- O-ring seal base on hose
- Includes a twin stud mounting kit
- Bench top cannot exceed 40 mm thickness
- 4 star WELS rated on mains pressure (7.5 l/pm)
- 4 star WELS rated on low pressure (8.0 l/pm)

E8111

Chrome

<http://www.methven.com/nz/our-other-brands/echo/echo-strata-basin-mixer-all-pressures>