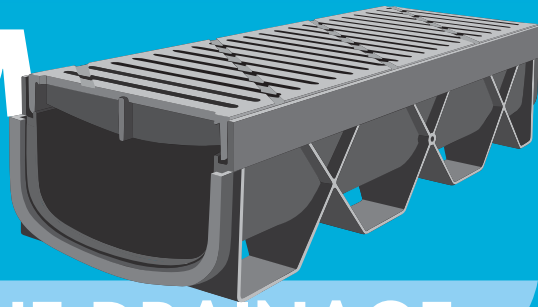


STORM MATE™



STRAIGHT LINE DRAINAGE

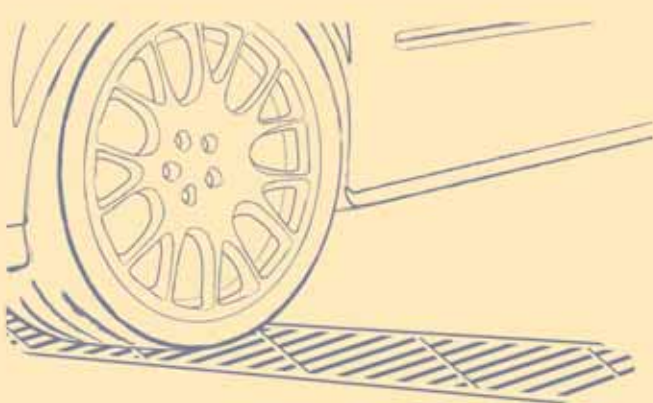
Designed to withstand 5 tonne vehicle weight

Pedestrian safe heelguard grate

100% Recycled Material

Connects to bottom outlets

Equal flow capacity to larger units



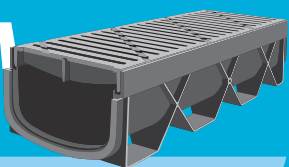
Dux

Designed for
PATHS & DRIVEWAYS



STORM MATE™

STRAIGHT LINE DRAINAGE



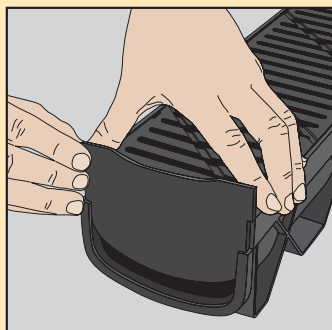
Installation Instructions for RELN Storm Mate™ Straight Line Drainage

Easy Installation in 4 simple steps



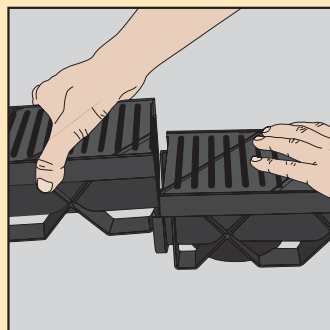
1. Dig the trench

- Form trench for Storm Mate™ System allowing for a 50mm bed of packed sand and wide enough for a minimum of 100mm backfill of concrete on each side.
- Allow slope of approximately 30cm to every 20m.



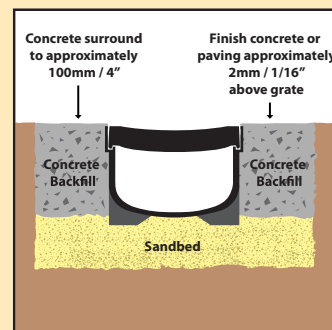
2. Lay Out

- Lay Storm Mate™ Channel out, End Cap and pipe fitted prior to concreting.
- Storm Mate™ Channel can be cut to length with a hacksaw, install with grate fitted.



3. Join

- Joins, End Caps and pipe connections may be sealed with silicone.
- Use End Cap at each end.
- Connect the low end of the Storm Mate™ to 90mm PVC pipe using Bottom Outlet, to allow water to clear.
- Bottom Outlet can be cut out with a knife.

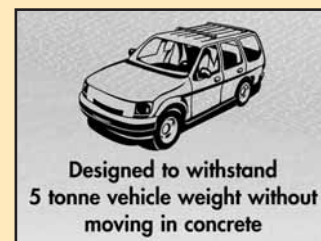


4. Pour concrete and finish

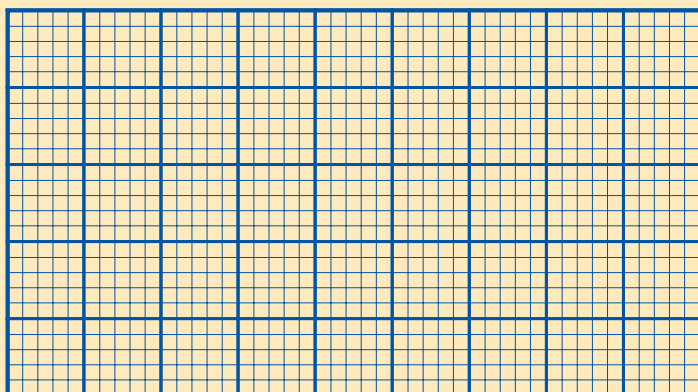
- Protect grate with masking tape during concrete pour.
- Top of grate must be 2mm below concrete or paver surface.
- Allow 72 hours for concrete to cure before vehicle use or removal of grates.

Storm Mate™ Technical Details

DESCRIPTION	LENGTH	WIDTH	HEIGHT	WEIGHT
Storm Mate™ with Black Plastic Heelguard Grate (Product code R2999)	1010mm	120mm	85mm	1.8kg
Storm Mate™ End Cap (Product code R2995)	20mm	120mm	79mm	20gm



DIY Storm Mate™ Drainage Planner



Checklist

COMPONENT	QTY	CHECK
Storm Mate™ 1m Channel		
Storm Mate™ End Caps		
90mm PVC Pipe		
Concrete		
Masking Tape		
Sand		

Dux

0800 367 389

an *OAliaxis* company
www.dux.co.nz