

# securaGold

## WATER TIGHT PLUMBING SYSTEMS

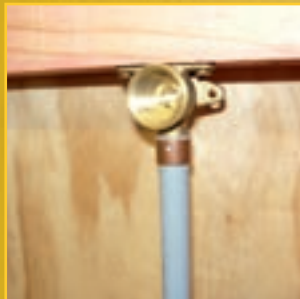
### DOUBLE FIX WINGBACK

The double fix wingback has rear and side fixing points, either of which can be used to secure the fitting in place.

- ▶ Reduces installation time and cost
- ▶ No need to find and fix scraps of timber
- ▶ Quick, secure fixing to mainframe studs and bracing (timber and metal)
- ▶ Easily position pipe connection for access and flow



#### ON HORIZONTAL STUD



#### ON VERTICAL STUD



#### DOUBLE FIX WINGBACK

CODE	DESCRIPTION
<b>FEMALE OUTLET</b>	
SDW3	Double fix wingback 15mm x 1/2" F
SDW4	Double fix wingback 20mm x 3/4" F
SDW34	Double fix wingback 15mm x 3/4" F
SDW43	Double fix wingback 20mm x 1/2" F
<b>MALE OUTLET</b>	
SDWM3100	Double fix wingback 15mm x 100mm 1/2" M
SDWM4100	Double fix wingback 20mm x 100mm 3/4" M

Another innovation from:

**Dux**  
INDUSTRIES LIMITED

[www.dux.co.nz](http://www.dux.co.nz)

an *OAliaxis* company

CUSTOMER SERVICES

**0800 367 389**