

NEW
HEEL GUARD
GRATE



Drainage like no other

10 YEAR WARRANTY.

- Flat grate surface for safe pedestrian, bike and wheelchair traffic.
- Diagonal slots allow faster drainage.
- Textured surface for extra grip.
- Withstands 5 tonne vehicle without moving in concrete.
- Cross braced design prevents floating when concreting and movement once set.
- Bottom outlet is an advantage when the slope is slight. It also allows more concrete over pipe when paving.
- Available in 1 and 3 metre lengths. 3 metre length means less work, fewer joints, less cost.
- Male/female ends on channel allow snap together joining.
- Rounded base assists rapid water flow with self-cleaning.
- End cap closes off end, and End Outlet connects to 90mm stormwater pipe.
- Stainless steel and ductile iron grates also available.
- Also available upon request, Storm Drain Civil range able to withstand 15 tonne loading.

Strong & Easy
Drainage



Storm Drain Easy to install.



Cut or Drill 90mm bottom outlet.



Designed to withstand 5 tonne vehicle weight without moving in concrete



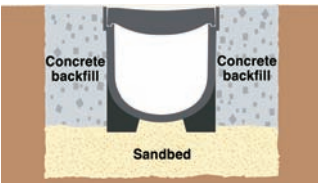
Anti-Floatation Bars.

Pre drilled End Outlet is quicker to install to 90mm PVC stormwater pipe.



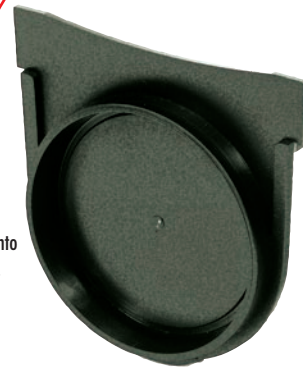
Concrete surround to approx 100mm

Finish concrete or paving approx 2mm above grate



Male/Female ends allow snap together joining

Slide End Cap into Storm Drain.



90° corner allows left or right hand extension of the Reln Storm Drain.



Tee allows for quick and easy branch lines.



Leaf guard easily fitted to outlet end to prevent leaves and debris entering stormwater system.

TECHNICAL DETAILS.

	LENGTH	WIDTH	HEIGHT	WEIGHT
Storm Drain with Plastic Grate	1010mm	120mm	129mm	2.3kg
Storm Drain Stainless Steel Grate	1010mm	120mm	129mm	3.2kg
Storm Drain with End Cap/End Outlet	35mm	120mm	123mm	50gms
Storm Drain 90° Corner	170mm	170mm	127mm	400gms
Storm Drain Tee	220mm	170mm	127mm	400gms

EASY INSTALLATION.

- Form trench for Reln Storm Drain allowing for 50mm bed of packed sand. If Reln Storm drain will be subject to vehicle traffic, surround in concrete.
- Allow slope of approx. 30cm to every 20m.
- Join Reln Storm Drain, joins and end caps may be sealed with silicone.
- Use Reln end cap at highest point of Reln Storm Drain.
- Connect the low end of the Storm Drain to a Rainwater pit, or, using 90mm PVC pipe use built in Bottom Outlet, or fit an End Outlet to allow water to clear.
- Lay Storm Drain out with corner piece connected and end cap fitted prior to concreting.
- Storm Drain can be cut to length with a hacksaw, install with grate fitted.
- Protect grate with masking tape during concrete pour.
- Top of grate must be 2mm below concrete or paver surface.



GARAGE PACK ALSO AVAILABLE WITH
4 x 1m LENGTHS CHANNEL WITH GRATE,
1 x END CAP, 1 x END CAP WITH OUTLET.

