



Dux[™]
COUPLING

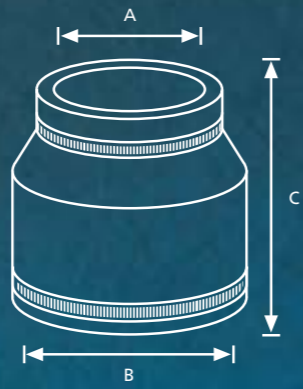
Join piping
systems with
speed and ease

an *Oliaxis* company

0800 367 389

www.dux.co.nz

Dux[™]

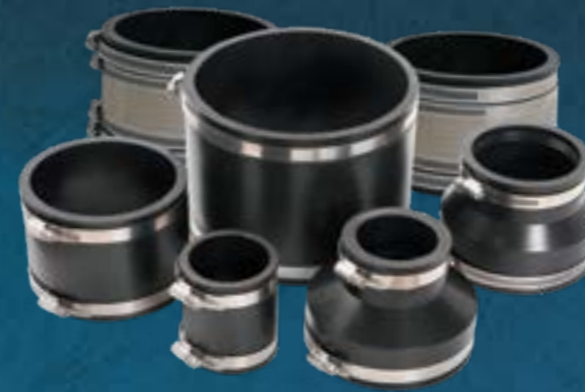


Sizes

Use the table below or, check out our handy online calculator at www.dux.co.nz (scan the QR code):



All measurements are coupling ID (Pipe OD) and in millimetres.



Ranges

D101 Series
Clay to Clay (Earthenware)

D104 Series
Concrete to Concrete

D106 Series
Concrete to Cast Iron(CI), PVC, Copper(CU), Galvanised Iron or Lead

D151 Series
Fibre Cement Fibre or Ductile Iron to PVC, Galvanised Iron or Cast Iron

D155 Series
Fibre Cement Fibre or Ductile Iron to Fibre Cement Fibre or Ductile Iron

D156 Series
Any combination of Plastic, PVC, Copper, Galvanised Iron, Cast Iron or Lead

DUX Series
Shear band couplings designed for a range of pipes

	Code	A	B	C
	DKDWC100	18 Range 17-19	23 Range 22-24	68
	DKCTC150	35 Range 33-39	35 Range 33-39	60
	DKDTC215	36 Range 34-38	60 Range 57-63	59
	DKDTC150	38 Range 36-40	48 Range 46-50	58
	D156-125	42 Range 40-44	42 Range 40-44	88
	D156-150	49 Range 47-51	49 Range 47-51	90
	D156-22	60 Range 57-63	60 Range 57-63	88
	D156-32	60 Range 57-63	89 Range 85-93	101
	D156-42	60 Range 57-63	110 Range 105-116	101
	D160-22	70 Range 67-74	70 Range 67-74	100
	D106-43	85 Range 81-89	144 Range 137-151	101
	D156-43	86 Range 82-90	110 Range 105-116	101

	Code	A	B	C
	D156-33	88 Range 84-92	88 Range 84-92	101
	D156-350	90 Range 85-95	90 Range 85-95	93
	D156-44	110 Range 105-116	110 Range 105-116	147
	D106-44	110 Range 105-116	144 Range 137-151	101
	D106-64	110 Range 105-116	198 Range 188-208	152
	D151-44	111 Range 105-117	121 Range 115-127	101
	D156-64	112 Range 106-118	170 Range 162-179	147
	D155-44	120 Range 114-126	120 Range 114-126	99
	D160-44	125 Range 119-131	125 Range 119-131	100
	D104-44	144 Range 137-151	144 Range 137-151	101
	D151-66	160 Range 152-168	180 Range 171-189	152

	Code	A	B	C
	D106-66	162 Range 154-170	198 Range 188-208	152
	D156-66	170 Range 162-179	170 Range 162-179	147
	D101-66	188 Range 179-197	188 Range 179-197	152
	D104-66	198 Range 188-208	198 Range 188-208	152
	D156-88	215 Range 204-226	215 Range 204-226	147
	D104-88	260 Range 247-273	260 Range 247-273	152
	D151-1010	265 Range 252-278	280 Range 266-294	152
	D106-1010	265 Range 252-278	320 Range 304-336	160
	D156-1010	268 Range 255-281	268 Range 255-281	160
	D101-1010	298 Range 283-313	298 Range 283-313	152
	D156-1212	326 Range 310-342	326 Range 310-342	160

	Code	A	B	C
	DKC101	38 Range 36-40		38
	DKC102	50 Range 48-53		38
	DKC103	75 Range 71-79		43
	DKC104	100 Range 95-105		50
	DUX115	110 Range 105-116	110 Range 105-116	147
	DUX125	120 Range 114-126	120 Range 114-126	99
	DUX150	144 Range 137-151	144 Range 137-151	101
	DUX180	170 Range 162-179	170 Range 162-179	147
	DUX200	188 Range 179-197	188 Range 179-197	152
	DUX225	215 Range 204-226	215 Range 204-226	147
	DUX320	326 Range 310-342	326 Range 310-342	160



Application

Dux Couplings and shear bands are the easiest way of joining 2 pipes together or to repair a broken pipe. Their quick installation method saves you time and money.

Loosen off the clamps, slide the coupling or shear band over the pipe and tighten the clamp with a flat blade screwdriver or spanner. No special tools, glue, welding or other materials required. Test joint for soundness before backfilling or concealing.

Installation must be in strict accordance with the product installation instructions. A torque of 5.6Nm is recommended for both Dux Couplings and Dux Shear Bands. The installer is responsible for the workmanship of the installation.

Material Features

- Elastomeric polyvinyl chloride (PVC) is UV stabilized and air, water and smoke tested
- The PVC (flexes +/-5%) with earth movement maintaining its seal
- Resistant to ozone, fungus growth and normal sewer gases
- Proven to withstand temperatures up to 38°C continuous and 60°C intermittent – the lowest temperature being -40°C. (Melt temperature is 170°C)
- Clamps and shear bands are made from Grade 316 stainless steel for corrosion and rust resistance. Clamps are slotted for greater flexibility and sealing efficiency.

Reliable and Durable

Dux Couplings are WaterMark certified and satisfy the durability provisions of the New Zealand Building Code and comply with the standard – AS/NZS 4327 – Type A accredited:

- 50 years for connections where access is difficult (e.g. under concrete)
- 15 years for connections where ease of access is moderate, but difficult to replace (e.g. typical drainage system laid adjacent to a building foundation).