

# Dektite Soaker

## The perfect flashing for all tray roofs

- ✓ The large base of the Dektite Soaker dramatically reduces rainwater back up on very low or very high roof pitches and deep ribbed roofing profiles.
- ✓ Dektite Soakers are ready to use straight from the box.
- ✓ Faster to flash than old fashioned methods.
- ✓ The unique corrosion resistant aluminium flange is ideal for low pitch and deep profile roofs, providing a positive leak-proof seal.
- ✓ EPDM withstands temperatures from -50°C - 115°C and up to 150°C intermittently.

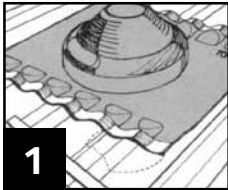
### IMPORTANT:

**For any pitch above 40° do not cut below the first three sizing ribs on the 603, 605 and 606**

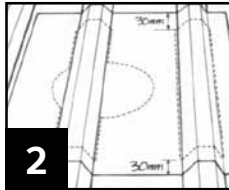


Code	Base (mm)	Pipe (mm)	Pitch	Pipe (mm)	Pitch
DF 602	410 x 360	75-160	0-60°		
DF 603	485 x 460	114-165	0-60°	114-255	0-40°
DF 605	708 x 635	250-358	0-60°	250-410	0-40°
DF 606	1006 x 905	380-470	0-60°	380-610	0-40°

## Installation Instructions:



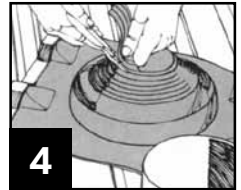
1 Mark position of pipe on roofing sheet, centre Dektite Soaker over mark ensuring word "top" is towards highest part of roof, and form Dektite Soaker flanges to roof profile.



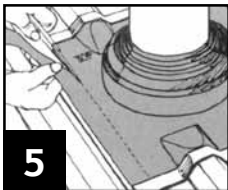
2 Mark ribs or corrugations to be removed to allow adequate drainage around cone. Allow at least 30mm all round to fasten Dektite Soaker's aluminium strips to roofing sheet.



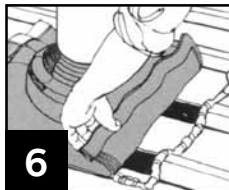
3 Cut out marked portions of roof, filing away sharp edges and install pipe securely in place. Where required, support cut sections of sheet with additional framing.



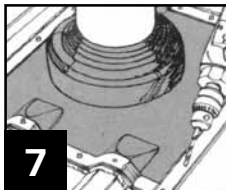
4 Trim Dektite Soaker cone to suit pipe size with sharp tin snips and slide down pipe using water as lubricant.



5 Form Dektite Soaker base into contours of roofing sheet, positioning loose strips on either side of cone in best position to ensure drainage of pan or tray. Trim excess EPDM from outside of loose strips. Trimming should be considered prior to cutting of the roof sheet.



6 Apply a generous bead of neutral-cure silicone sealant to underside of Dektite Soaker base along entire perimeter (refer to page 13 for silicone types).



7 Fasten flashing to roof using washed self-drilling screws, ensuring Dektite Soaker forms flat trough for water run-off. Fix integral aluminium strips from centre outwards before attaching loose strips provided.

