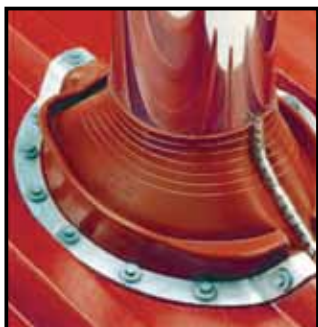


Dektite Retrofit

When it has to flash around and not over...

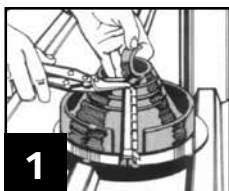


- ✓ Wraps around existing or difficult to access pipes, installations are a breeze.
- ✓ The built-in crimps mean no loose clips or rivets, snaps together in seconds.
- ✓ Made from quality polymer compounds, grips tight and stays tight.
- ✓ The supple aluminium base conforms like magic for easy profile moulding.
- ✓ Can also be used to flash square penetrations. Just add 30% to the pipe diameter and trim the cone to suit.
- ✓ EPDM withstands temperatures from -50°C - 115°C and up to 150°C intermittently.
- ✓ Red Silicone will withstand constant temperatures at the roofline of -50°C to 200°C and up to 250°C intermittently
- ✓ For pipes over 150mm Ø use a stainless steel support / hose clamp.



Code: Grey EPDM	Code: Red Silicone	Base (mm)	Pipe (mm)	Pitch
RF 801G	RF901	160	20-70	0-40°
RF 802G	RF902	273	50-185	0-40°
RF 803G	RF903	369	85-255	0-40°

Installation Instructions:



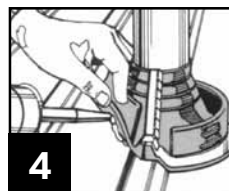
Measure outside pipe diameter and trim cone exactly where indicated.
For square pipes add 30%.



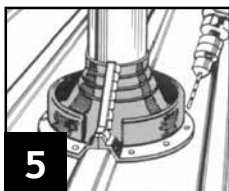
With clip in down-stream position, tension top of cone around pipe and engage metal teeth in opposing pockets.



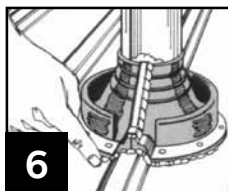
To assist in locating clip into pocket, place hand behind the seam. Fasten clip with pliers or multi-grips, working from top to base. **Do not overcrimp.**



Apply a liberal bead of neutral silicone sealant to the underside of Dektite base and press to contour of sheet profile.



Fasten flashing with washered self drilling screws. As per diagram, secure clip by placing a fastener either side of the clip first.



Apply sealant to top of crimp closure and any other potential leak areas. (refer to page 13 for silicone types).