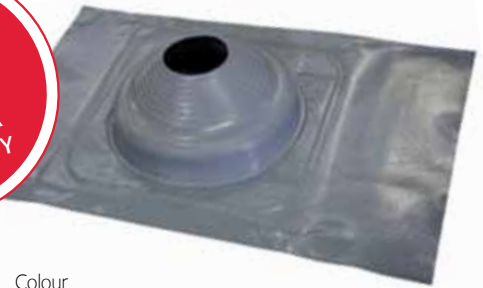


# Acrylead Tile Flash

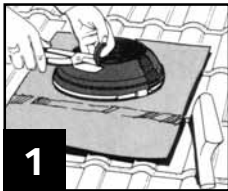
## For tiled and slate roofs

- ✓ Acrylead offers the benefit of a thermo baked acrylic primer coating to both surfaces of the lead apron, ready for finish coating to match surrounding roof or trim colours.
- ✓ The potential for lead oxides to leach from the apron and cause staining is now virtually eliminated.
- ✓ EPDM withstands temperatures from  $-50^{\circ}\text{C}$  -  $115^{\circ}\text{C}$  and up to  $150^{\circ}\text{C}$  intermittently.
- ✓ Easy to install - no messy sealants required or sticky backing used.



Code	Base (mm)	Pipe (mm)	Pitch	Colour
TFL5-55	300 x 500	5-55	0-45°	GREY (EPDM)
TFL50-70	300 x 500	50-70	0-45°	
TFL5-127	400 x 600	5-127	0-45°	
TFL75-175	450 x 600	75-175	0-45°	
TFL150-300	600 x 900	150-300	0-45°	

## Installation Instructions for Lead and Aluminium Flashing:



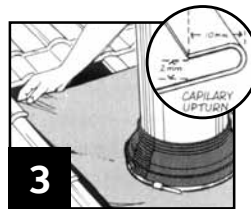
1

Trim Tileflash cone to suit pipe size.



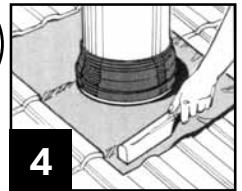
2

After first lubricating the flue with water, slide Tileflash down to tile level.



3

Flatten the Acrylead and form a anti-cappillary fold. Then place the upper edge of the base underneath the tiles up stream.



4

Finally, dress the apron to the surrounding tile area.